

Phonetik und Phonologie der slavischen Sprachen

Wintersemester 2023/2024



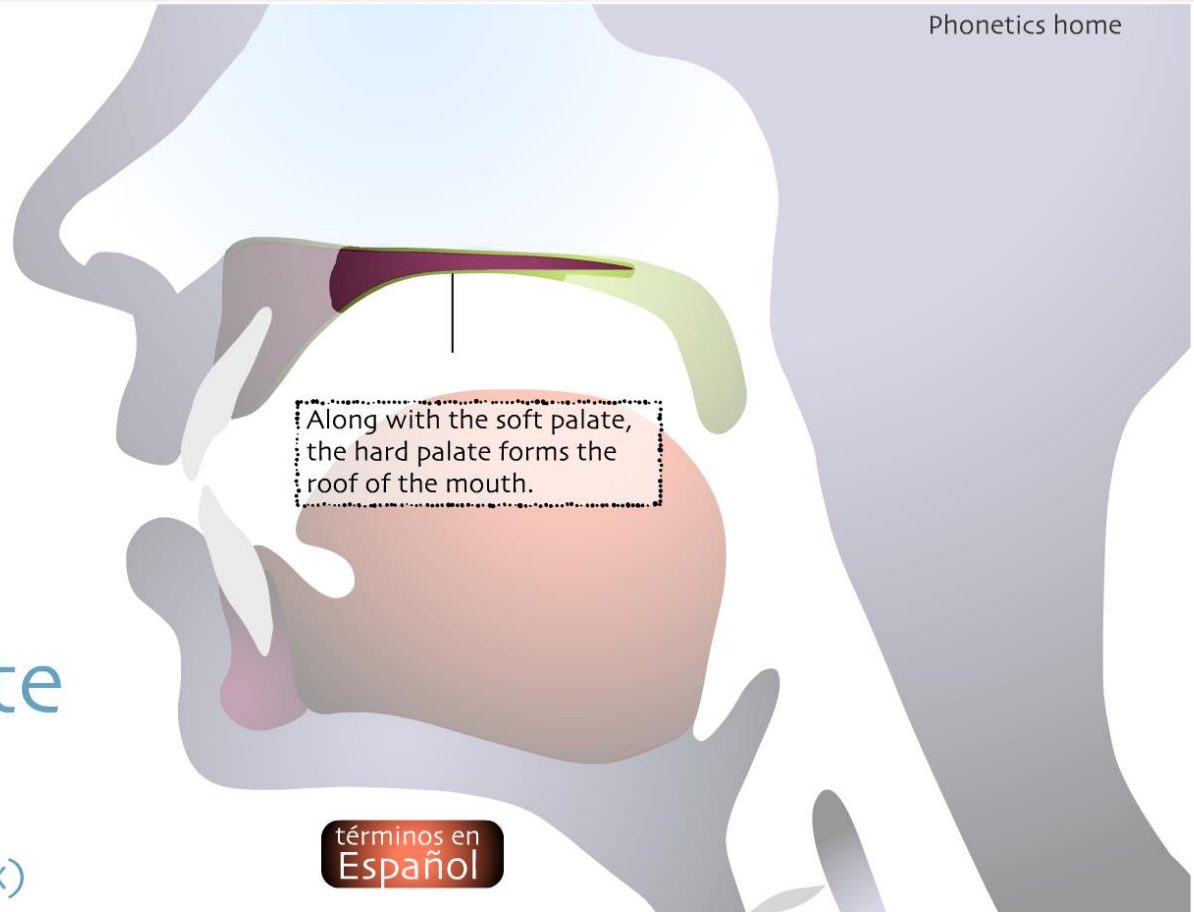
Bistra Andreeva

andreeva@lst.uni-saarland.de

<http://www.coli.uni-saarland.de/~andreeva/>

Palatalisierung: Artikulation

Alveolar Ridge
Soft Palate
Teeth
Lips
Oral Cavity
Epiglottis
Vocal Folds
Pharynx
Nasal Cavity
Mandible
Hard Palate
Tongue blade
Tongue back
Tongue tip (apex)



<http://soundsofspeech.uiowa.edu/index.html#english>

<https://www.seeingspeech.ac.uk/ipa-charts/?chart=1&datatype=3&speaker=1>

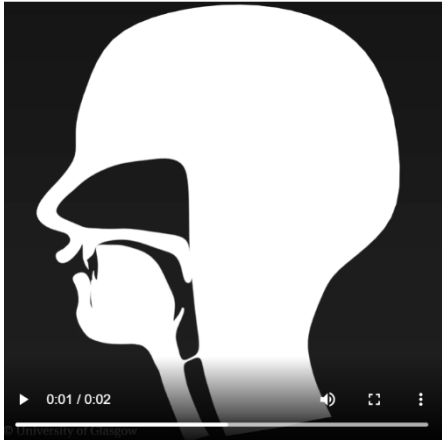
alveolar

post-alveolar

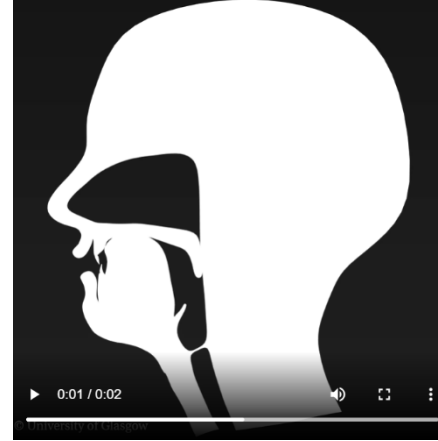
palatal

velar

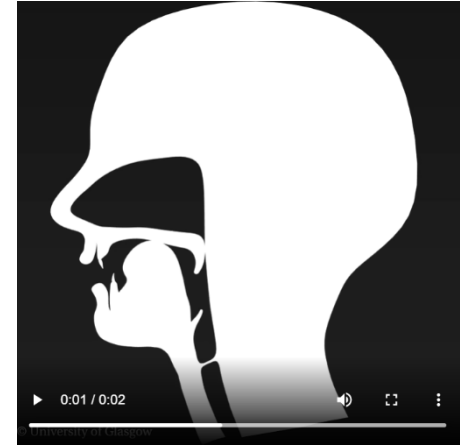
t



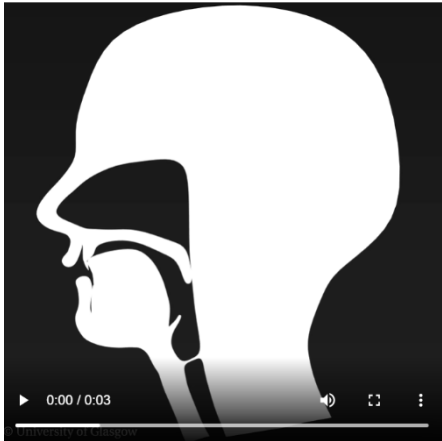
c



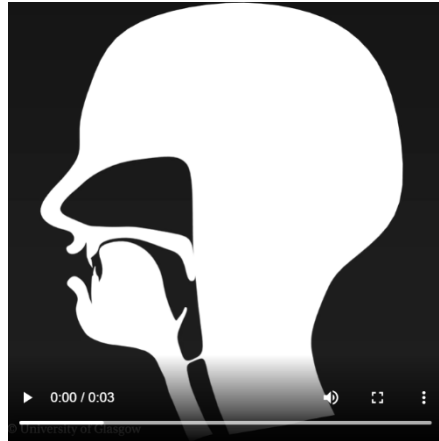
k



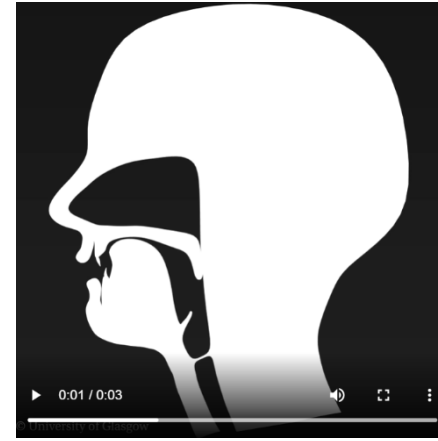
s



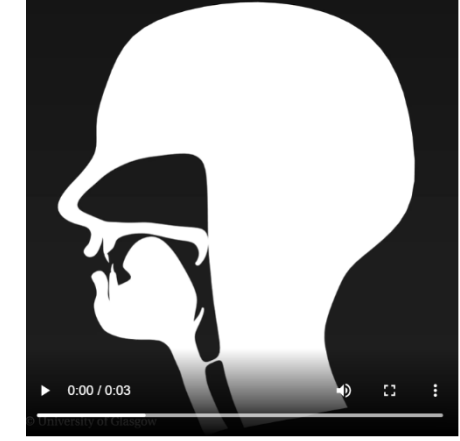
ʃ



ç



x



Palatalisierung: Akustik

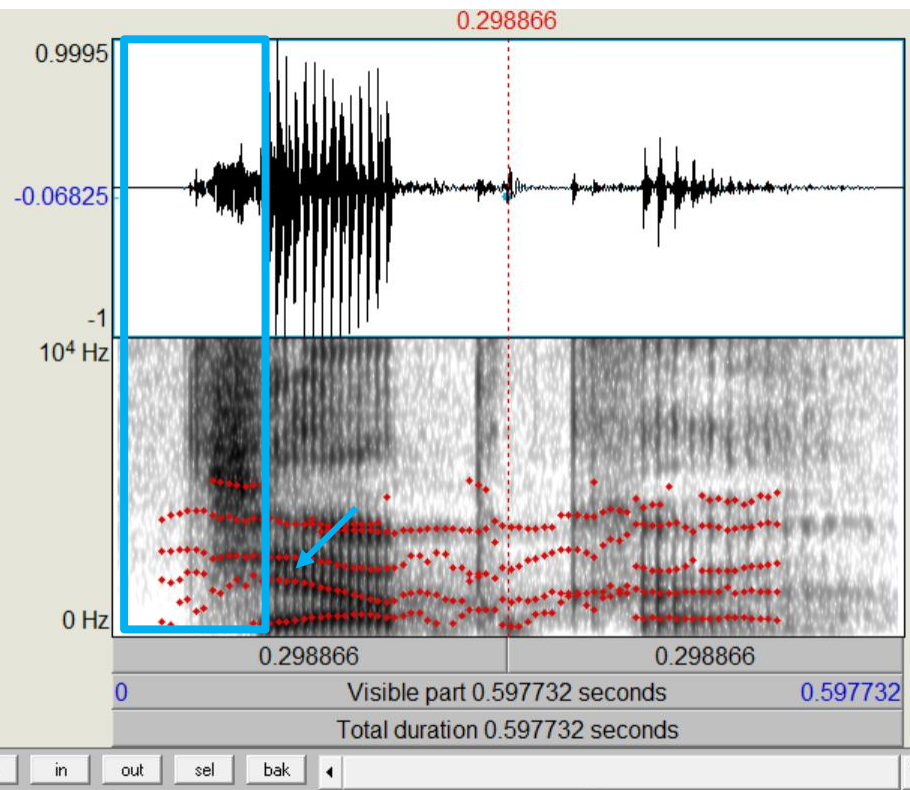
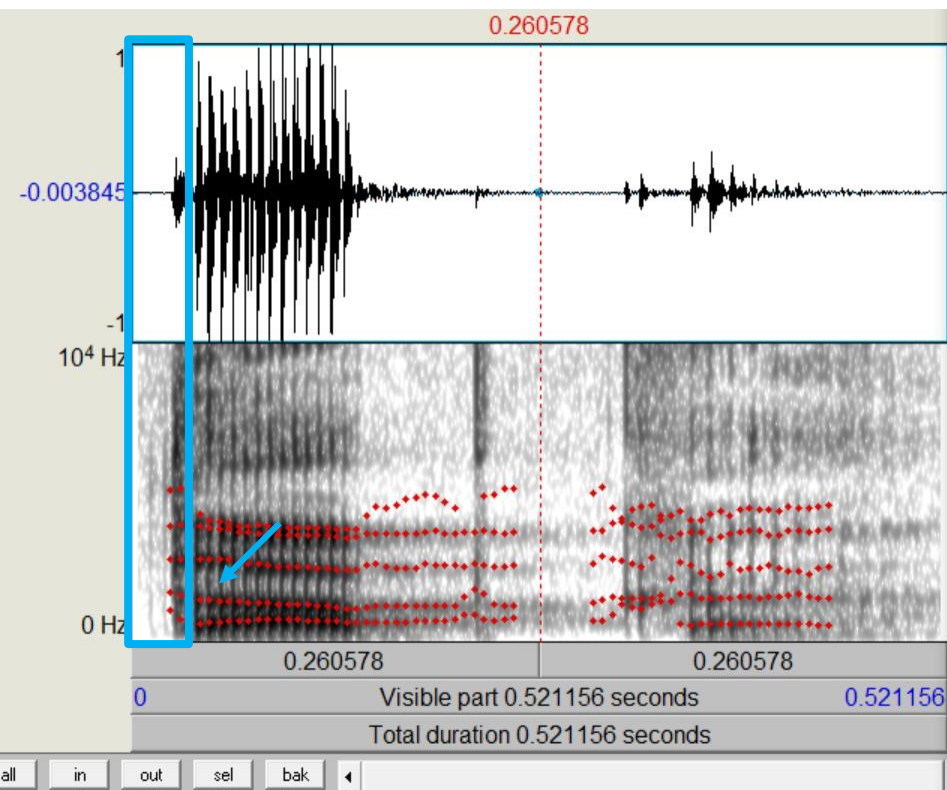
- *bei Vokalen: erhöhte Transitionen des F2*
- *bei Frikativen und bei der Lösung der Plosive:
Energiekonzentration in den höheren Frequenzbereichen*




/tapka/ - Sneaker




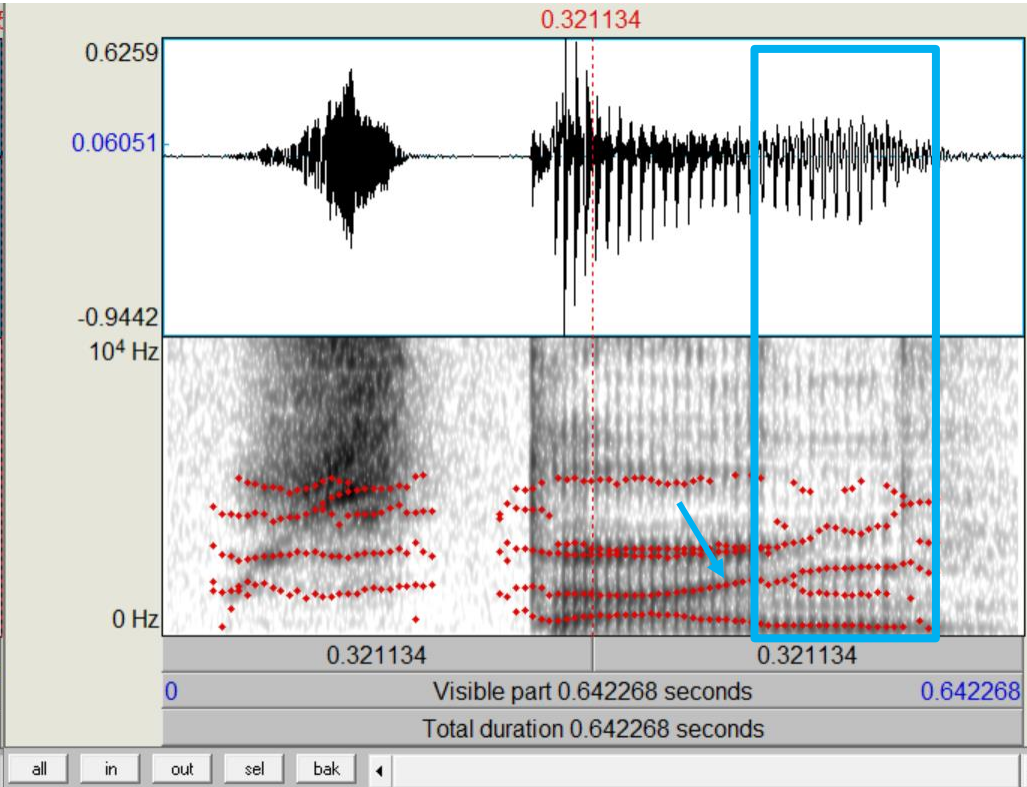
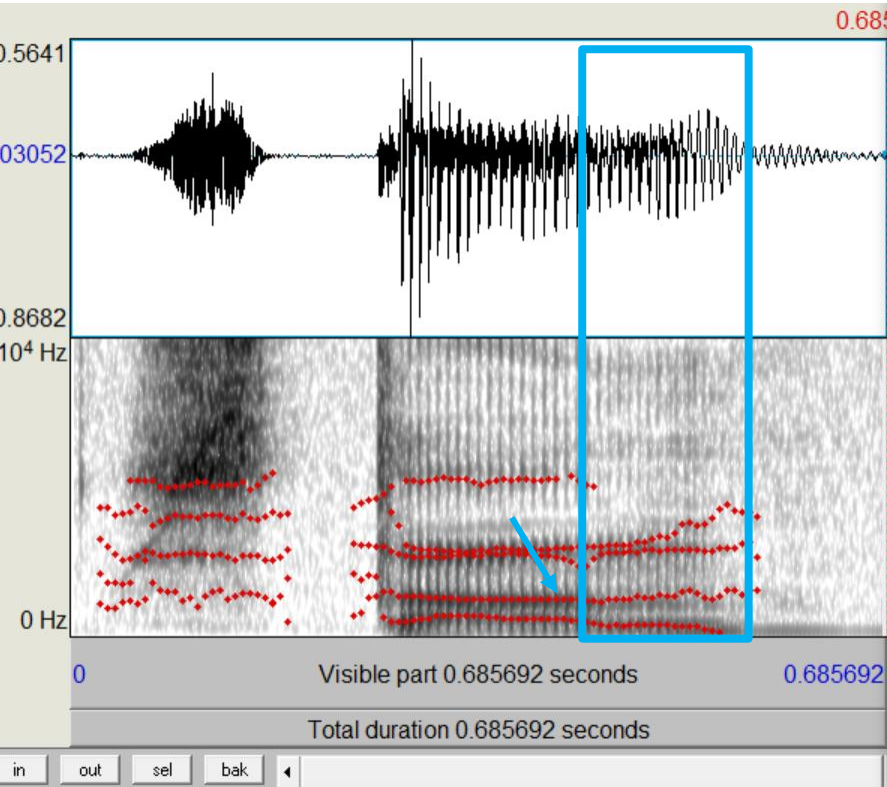
/tʲapka/ - Zerhacker



Russisch

 /stan/ - Zustand

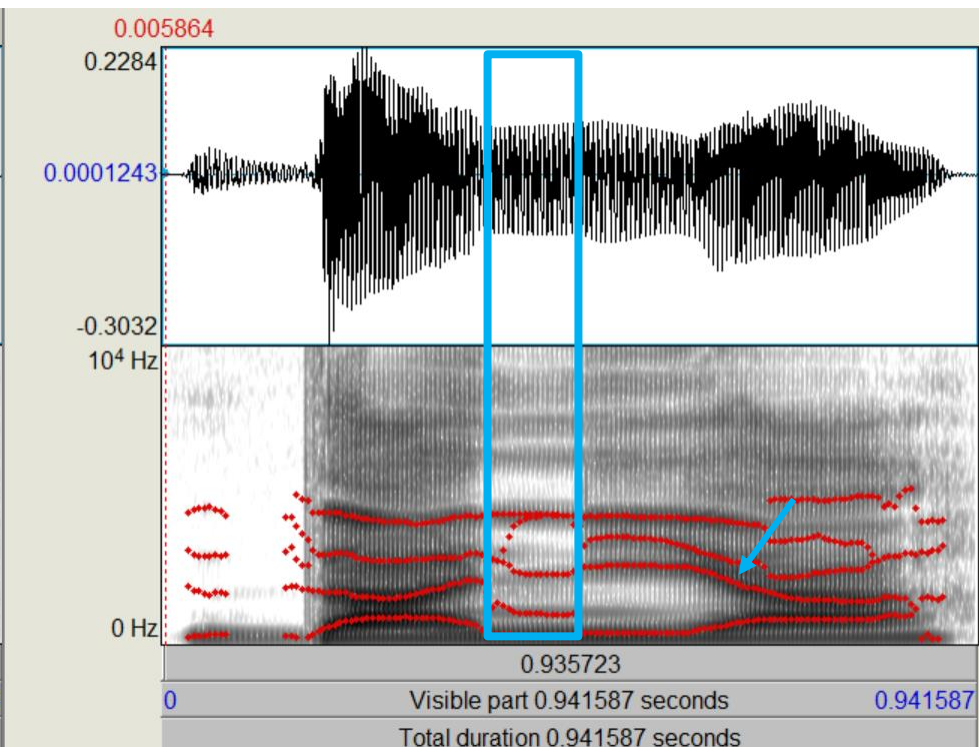
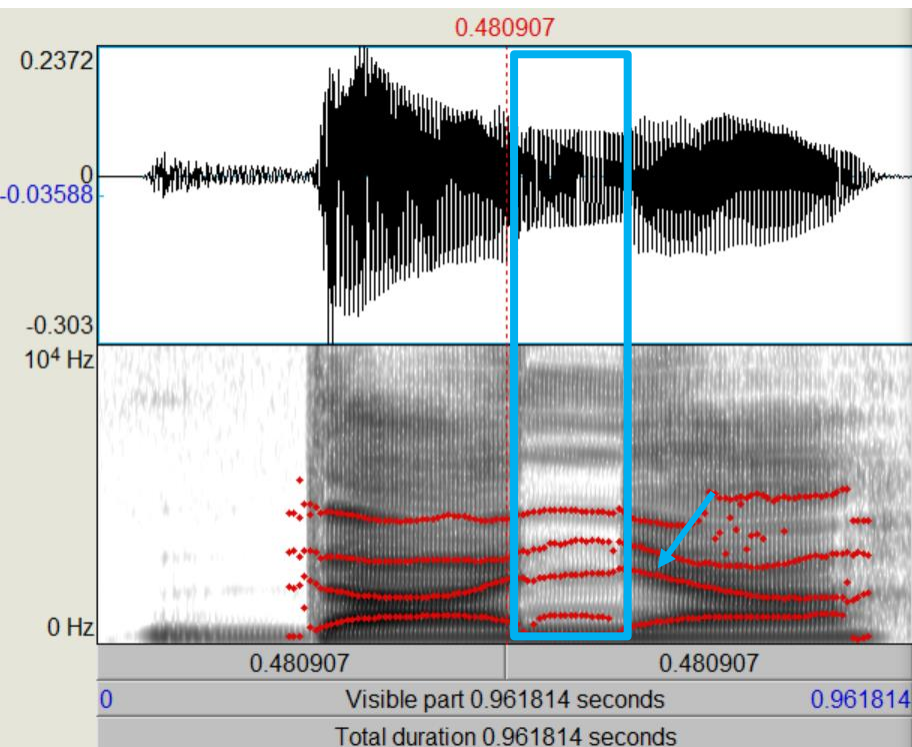
 /stan^j/ - steh auf



Ukrainisch

🔊 /dajna/ - Speisen

🔊 /dajja/ - Dänemark



Polnisch

CONSONANTS (PULMONIC)

© 2018 IPA

	Bilabial	Labiodental	Dental	Alveolar	Postalveolar	Retroflex	Palatal	Velar	Uvular	Pharyngeal	Glottal
Plosive	p b		t d			ʈ ɖ	c ɟ	k ɡ	q ɢ		ʔ
Nasal	m	ɱ	n			ɳ	ɲ	ŋ	ɴ		
Trill	ʙ		r						ʀ		
Tap or Flap		ⱱ	ɾ			ɽ					
Fricative	ɸ β	f v	θ ð	s z	ʃ ʒ	ʂ ʐ	ç ʝ	x ɣ	χ ʁ	ħ ʕ	h ɦ
Lateral fricative			ɬ ɮ								
Approximant		ʋ	ɹ			ɻ	j	ɰ			
Lateral approximant			l			ɭ	ʎ	ʟ			

Symbols to the right in a cell are voiced, to the left are voiceless. Shaded areas denote articulations judged impossible.

j Palatalized t^j d^j

p' p'

Table 3.8. *Slavic consonant phonemes*

	Labial		Dental		Post-Alveolar	Alveolo-Palatal	Palatal	Velar/Uvular	Glottal
Stop	p	p'	t	t'			t' k'	k k'	[ʔ]
	b	b'	d	d'			d' g'	g g'	
Nasal	m	m'	n	n'			n'	[ŋ]	
Fricative	f	f'	s	s'	š	š'		x	x'
	v	v'	z	z'	ž	ž'		ɣ	ɣ'
(or Semivowels)	w	w' [ɥ]					j		h
Affricate			c	c'	č	č'			
			dz	dz'	dž	dž'			
Liquid			r	r'			r'		
			l	l'	ř	ř'		[ɽ ^j] _ɽ	

Table 3.9. *Consonant phonemes common to all Slavic languages*

	Labial		Dental/Alveolar		Post-Alveolar		Palatal	Velar	Glottal
Stops	p	b	t	d				k (g)	
Nasals		m		n					
Fricatives	(v)	(w)	s	z	š	ž	j	x (ɣ)	(h)
Affricates			c		č				
Liquids			r	l					